

Summary of Birds seen at or over Koorda Native Flora Reserve. (Site #2).

Atlas' Surveys		Survey Dates	24.07.2018 \$ ^	25.07.2018 \$	26.07.2018 \$ ^	24-26.07.2018 Combined "															
		Year of Surveys	2018																		
BA#	Common Name	Scientific Name																			
034	Common Bronzewing	<i>Phaps chalcoptera</i>	1	1		2															
043	Crested Pigeon	<i>Ocyphaps lophotes</i>	8	2		10															
337	Pallid Cuckoo	<i>Heteroscenes pallidus</i>	2	2	1	2															
224	Wedge-tailed Eagle	<i>Aquila audax</i>																			
218	Spotted Harrier	<i>Circus assimilis</i>																			
228	Whistling Kite	<i>Haliastur sphenurus</i>		1		1															
240	Nankeen Kestrel	<i>Falco cenchroides</i>	2			2															
235	Australian Hobby	<i>Falco longipennis</i>																			
264	Red-tailed Black Cockatoo	<i>Calyptorhynchus banksii</i>																			
273	Galah	<i>Eolophus roseicapilla</i>	9			9															
296	Mulga Parrot	<i>Psephotus varius</i>																			
294	Australian Ringneck	<i>Barnardius zonarius</i>	4	4	4	12															
307	Elegant Parrot	<i>Neophema elegans</i>																			
540	Blue-breasted Fairywren	<i>Malurus pulcherrimus</i>																			
583	Brown-headed Honeyeater	<i>Melithreptus brevirostris</i>																			
449	Crimson Chat	<i>Epthianura tricolor</i>		2		2															
448	White-fronted Chat	<i>Epthianura albifrons</i>		1		1															
640	Spiny-cheeked Honeyeater	<i>Acanthagenys rufogularis</i>	2			2															
638	Red Wattlebird	<i>Anthochaera carunculata</i>																			
608	Singing Honeyeater	<i>Gavicalis virescens</i>	7	7	2	9															
594	White-fronted Honeyeater	<i>Purnella albifrons</i>																			
635	Yellow-throated Miner	<i>Manorina flavigula</i>		2		2															
463	Western Gerygone	<i>Gerygone fusca</i>																			
486	Yellow-rumped Thornbill	<i>Acanthiza chrysorrhoa</i>	2	4		6															
445	White-browed Babbler	<i>Pomatostomus superciliosus</i>	2	10		12															
401	Rufous Whistler	<i>Pachycephala rufiventris</i>	1	2		2															
424	Black-faced Cuckooshrike	<i>Coracina novaehollandiae</i>																			
408	Grey Shrikethrush	<i>Colluricincla harmonica</i>	1	2		2															
419	Crested Bellbird	<i>Oreoica gutturalis</i>	2	2		2															
705	Australian Magpie	<i>Gymnorhina tibicen</i>	4	1	5	10															
700	Pied Butcherbird	<i>Cracticus nigrogularis</i>	1	3	2	4															
545	White-browed Woodswallow	<i>Artamus superciliosus</i>																			
546	Black-faced Woodswallow	<i>Artamus cinereus</i>	5	3		8															
364	Willie Wagtail	<i>Rhipidura leucophrys</i>	5	3		8															
361	Grey Fantail	<i>Rhipidura fuliginosa</i>	2			2															
930	Australian Raven	<i>Corvus coronoides</i>	6	6	4	16															
415	Magpie-lark	<i>Grallina cyanoleuca</i>	2			2															
381	Red-capped Robin	<i>Petroica goodenovii</i>	3	5		8															
377	Jacky Winter	<i>Microeca fascians</i>																			
441	Southern Scrub Robin	<i>Drymodes brunneopygia</i>																			
385	Hooded Robin	<i>Melanodryas cucullata</i>	1			1															
653	Zebra Finch	<i>Taeniopygia guttata</i>		2		2															
647	Australian Pipit	<i>Anthus australis</i>	1	1	1	3															
508	Brown Songlark	<i>Megalurus cruralis</i>		1		1															
509	Rufous Songlark	<i>Megalurus mathewsi</i>																			
358	White-backed Swallow	<i>Cheramoeca leucosterna</i>																			
359	Tree Martin	<i>Petrochelidon nigricans</i>	5			5															
357	Welcome Swallow	<i>Hirundo neoxena</i>																			
818	Corella sp			1		1															
837	Crow & Raven spp																				

Summary of Birds seen at or over Koorda Native Flora Reserve. (Site #2).

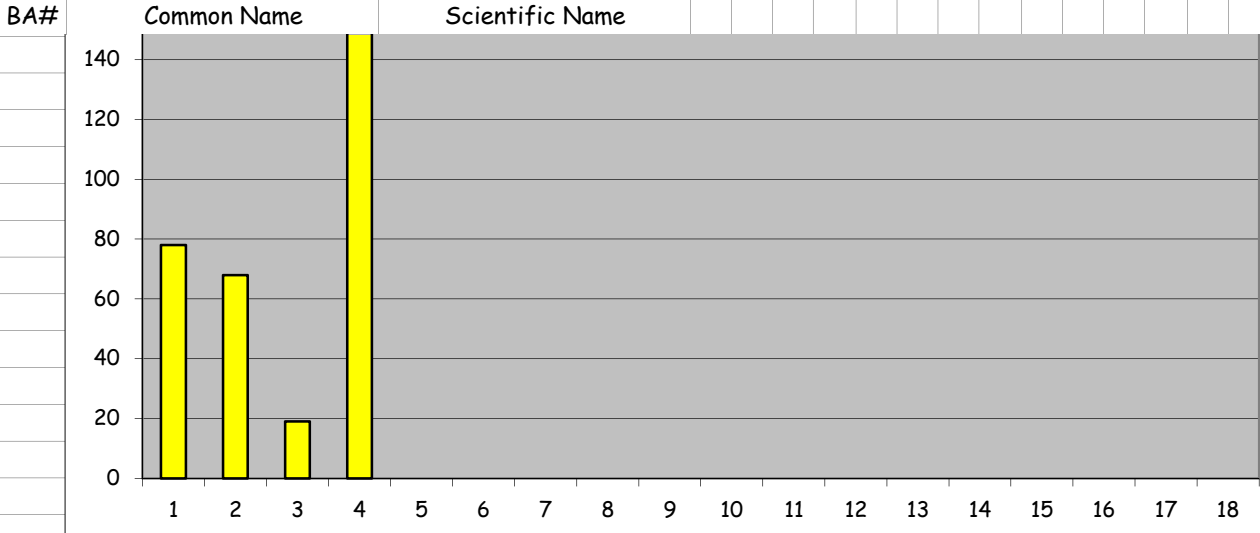
Atlas' Surveys		Survey Dates	Year of Surveys																			
		24.07.2018 \$ ^	25.07.2018 \$	26.07.2018 \$ ^	24-26.07.2018 Combined "																	
															2018							
BA#	Common Name	Scientific Name																				
				Bird Numbers Seen	78	68	19	#														
				Species seen	24	24	7	31														
				Actual Visits	7a	7b	7c															
				As charted	1	2	3	4	5	6	7	8	9	10	11	12	13	14	15	16	17	18
O/A Total Species = 50																						
Legend :																						
Summer					Winter																	
Autumn					Spring																	
^ Denotes only half day survey																						
# = Historic Data from the Atlas Database																						
" Denotes Data issued to Birdlife WA.																						
\$ Denotes 500m Rad Survey																						
2a -2d etc denotes overnight camping																						
(Site #2) Denotes 'The Wheatbelt Way' Circuit Survey Number / Visit																						
818	Denotes NEW Species added																					

Summary of Birds seen at or over Koorda Native Flora Reserve. (Site #2).

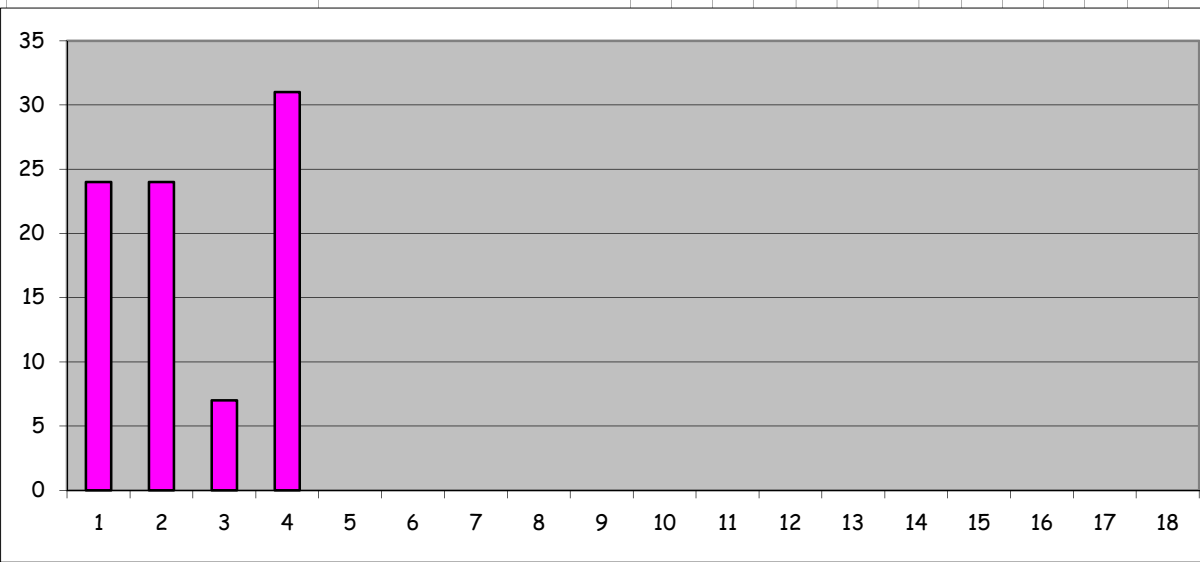
Atlas' Surveys

Survey Dates
Year of Surveys

24.07.2018 \$ ^
25.07.2018 \$
26.07.2018 \$ ^
24-26.07.2018 Combined "



■ Bird Numbers Seen



■ Species seen